

ANNUAL REPORT | 2017

KENOSHA COUNTY UNIVERSITY OF WISCONSIN-EXTENSION

19600 75TH STREET, SUITE #2
BRISTOL, WI 53104
(262) 857-1945
UWEXTENSION@KENOSHACOUNTY.ORG
[FACEBOOK.COM/KENOSHACOUNTYUWEX](https://www.facebook.com/KENOSHACOUNTYUWEX)
KENOSHA.UWEX.EDU

ABOUT US

Kenosha County UW-Extension is a partnership among Kenosha County, the University of Wisconsin and the United States Department of Agriculture (USDA) along with local community partners.



EDUCATION AND LEADERSHIP DEVELOPMENT

In Kenosha County UW-Extension, education and leadership development is critical to grow and sustain thriving communities.

LEADERSHIP KENOSHA

In partnership with the Kenosha Area Chamber of Commerce, UW-Extension coordinates Leadership Kenosha, a professional development program that focuses on personal and interpersonal skills, team building, conflict management, and communication and presentation skills. In 2017, 33 students participated in Leadership Kenosha under the facilitation of Tedi Winnett, the previous director.



YOUTH AS RESOURCES AND YOUTH IN GOVERNANCE

Youth as Resources is a grant-giving program that funds youth-designed, youth-led community service projects in partnership with United Way of Kenosha County. In 2016-2017, the youth/adult board funded 15 projects, disbursing \$5,045 for community projects.

Youth in Governance is a youth leadership program in which youth serve on Kenosha County Board Committees and the Joint Services Board. In 2016-2017, 172 local youth were nominated to the program, 42 youth applied, and 14 were selected to participate in the program. Youth representatives bring a valued youth voice to Kenosha County government.



KENOSHA/RACINE FOODWISE

The FoodWise team advanced nutrition education to 7,184 learners with 24,280 teaching contacts between Kenosha and Racine Counties. The program focuses on teaching a series of lessons with an effort to increase a change of health and lifestyle behavior. The program partners with 54 agencies in Racine and 32 agencies in Kenosha. The agencies are comprised of public schools, food pantries, emergency and domestic abuse shelters, and two county workforce development centers.



KENOSHA COUNTY 4-H PROGRAM

The Kenosha County 4-H program had a total of 460 members in 2017. 120 youth and parent teams competed at the Pine wood Derby Race. 55 youth attended Project Day, a day when community members can explore project ideas and learn skills hands on. 36 youth attended summer camp. 130 attendees participated in the annual 4-H Open House to learn about the 4-H program, while 120 general leaders in Kenosha County advanced positive leadership and citizenship skills.

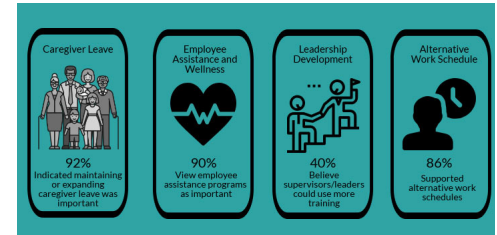


RESEARCH AND PUBLICATIONS

UW-Extension pursues foundational work to develop the data resources and planning frameworks to build community capacity.

EMPLOYEE ENGAGEMENT: MAKING KENOSHA COUNTY AN EMPLOYER OF CHOICE

Kenosha County UW-Extension partnered with Kenosha County Human Resources to implement and analyze a comprehensive employee engagement survey. With 600+ survey participants, administrators and department heads received insight into how to add value to the experience working for Kenosha County; providing leadership development training, offering employee assistance programming, piloting flexible scheduling and extending caregiver leave allowances. In December, these findings were shared statewide with members of the Wisconsin Counties Association.



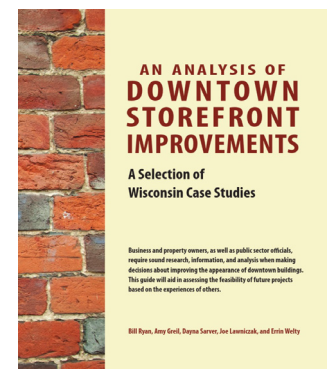
KENOSHA CREATIVE ECONOMY STRATEGIC PLAN

UW-Extension facilitated the launch, creation, and implementation of a community-wide planning process, the Kenosha Creative Economy Strategic Plan, in collaboration with UW-Madison’s Bolz Center for Arts Administration. Four primary initiatives were defined to include; fostering business and philanthropic partnerships, enhancing community marketing, revitalizing neighborhoods through the arts and culture projects, and advancing downtown entrepreneurship. This effort reached 1,000+ contacts. The plan is available at kenosha.uwex.edu.



IMPACTS OF STOREFRONT IMPROVEMENT

Community Development Educator Amy Greil’s findings in a 2016 study, “Economic Impact of Storefront Improvement,” helped establish the 2017 launch of a local façade improvement grant program in Downtown Kenosha, Inc. Nine projects were granted funds for physical improvements. These enrolled properties are now the focus of new case studies that will be evaluated for changes in first time customers, increases in sales revenues and rental rates.



THE FARM FRESH ATLAS

“The Farm Fresh Atlas,” a Southeastern publication featuring Wisconsin farms, farmers’ markets, restaurants, stores and other businesses, by Agriculture Educator Leigh Presley in collaboration with the Farm Fresh Atlas board. The goal of the atlas is to connect more people to local food. The atlas is also available online at farmfreshatlas.org.



OUTREACH AND CAPACITY BUILDING

UW-Extension makes the community a campus, reaching out to potential learners where they live and work.

KENOSHA COUNTY MASTER GARDENER PROGRAM

The Master Gardener Program in Kenosha County was started in 1994 with overall 240 people trained. Volunteers performed 492 hours in youth education service, 358 hours in adult education, and 3,183 hours in support service. There are currently 127 certified Master Gardener Volunteers (MGVs) in Kenosha and Racine counties, all contributing to a richer quality of life by merging gardening and community service. In 2017, the Master Gardener level 1 training resulted in 12 new interns.



BUSINESS IMPROVEMENT DISTRICT DEVELOPMENT AND EDUCATION

UW-Extension continued supporting the organizational development of the Uptown Brass Village Neighborhood Association. The association is looking toward convening the community, collecting input, and advancing community revitalization through the incorporation of a business improvement district.



ENHANCING KENOSHA COUNTY SUSTAINABILITY

UW-Extension played a key role in various sustainability efforts in Kenosha County through the cross-department Kenosha County Sustainability Team promoting awareness of energy efficiency efforts, recycling, and several employee engagement activities. Sustainable Kenosha County has returned significant value to county operations through its educational programs and outreach.



KENOSHA/RACINE AGRICULTURAL CLEAN SWEEP

Agriculture Educator Leigh Presley organized the annual Kenosha/Racine Agricultural Clean Sweep. 26,347 pounds of agricultural waste were collected during this event, far surpassing amounts collected at prior years' collections.



CONTACT US

Located in the Kenosha County Center | 19600 – 75th Street, Suite 2, Bristol, WI 53104 | E-mail: uwextension@kenoshacounty.org
Phone: 262-857-1945 | Fax: 262-857-1998 | Hours: Monday to Friday 8 AM-12 PM and 1 PM to 5 PM (closed during the lunch hour)

The FoodWise office is located at 1220 Mound Avenue, Racine, WI 53404 | Phone: 262-635-6824



Rebeca Alonso
Bilingual Nutrition Educator
262-635-6824
rebeca.alonso@ces.uwex.edu
FoodWise



Rebecca Garcia
Office Operations Associate
262-635-6824
rebecca.garcia@ces.uwex.edu
FoodWise



Alana Perez-Valliere
Nutrition Educator
262-635-6824
alana.perezvalliere@ces.uwex.edu
FoodWise



Cynthia Armstrong
Teaching Coordinator
262-635-6824
cynthia.armstrong@ces.uwex.edu
FoodWise



Amy Greil
Community Development Educator
262-857-1935
amy.greil@ces.uwex.edu



Leigh Presley
Agriculture Educator
Kenosha and Racine Counties
262-767-2905 | 262-857-1945
leigh.presley@ces.uwex.edu



Beverlee Baker
Area Extension Director
Kenosha and Racine Counties
262-210-6165
beverlee.baker@ces.uwex.edu



Jeanne Hilinske-Christensen
Horticulture Educator – Interim
Kenosha and Racine Counties
262-857-1945 | 262-767-2913
jeanne.hilinskechristensen@ces.uwex.edu



Nancy Retana
Communications Specialist
262-857-1949
nancy.retana@kenoshacounty.org



Fabiola Diaz
Bilingual Nutrition Educator
262-635-6824
fabiola.diaz@ces.uwex.edu
FoodWise



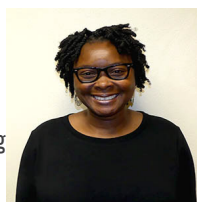
Nicole Leipski
Nutrition Educator
262-635-6824
Nicole.sicuroleipski@ces.uwex.edu
FoodWise



Bethany Sorce
4-H Program Assistant
262-857-1932
bethany.sorce@ces.uwex.edu



Wendy Epping
Administration Assistant,
Mornings
262-857-1945
wendy.epping@kenoshacounty.org



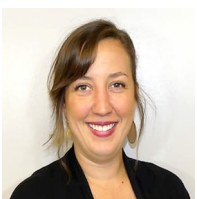
Vickie LeFlore
Youth Development Educator
262-857-1934
vickie.leflore@ces.uwex.edu



Terri Ward
Nutrition Administrator
262-635-6824
teresa.ward@ces.uwex.edu
FoodWise



Jill Frideres
Nutrition Educator
262-635-6824
jillian.frideres@ces.uwex.edu
FoodWise



Amy Macemon
Nutrition Educator
262-635-6824
amy.macemon@ces.uwex.edu
FoodWise



April Webb
Administration Assistant,
Afternoons
262-857-1945
april.webb@kenoshacounty.org